



COLLECTION BY [UNIQORNIO] :: VOL.1

# SUPERB PROMPT ARCHITECTURE



Midjourney

Stable Diffusion

Adobe Firefly

DALL·E 2

Bing

**Quickly** create  
incredible images  
by writing a savvy  
paragraph of  
simple words.

# 28

ADVANCED AND SECRET  
PROMPTS :: IMAGES WRITTEN  
BY EXPERTS.  
**READY FOR COPY & PASTE**



Hi, my name is **UNIQUORNIO**.

**IT'S GREAT TO SEE  
YOU HERE.**

This is a guide for designers and artists who aren't yet sure how to start taking full advantage of the technology that turns simple words into stunning images, so called Generative AI.

To help you to create your own images and optimize your learning, I have analyzed, deciphered, deconstructed and rewritten over 730 prompts on over 120 experimental AI digital artists, both amateurs and professionals, from around the world. So you can freely experiment with endless creative paths.

Please do note that this material is for educational purposes only. The images you'll see below have been shared by the AI artists you'll see in attribution text at the top/bottom of each piece.

**I wish you an incredible journey!**



# WHAT IS?

Generative AI can create or generate new images, based on a given prompt or set of rules. The AI uses algorithms and models to interpret the prompt and generate an image that is relevant and coherent with the given input. This process involves learning from large datasets of existing images and applying that knowledge to generate new, unique images.

Use these applications to make the most of your prompt and create the perfect image.



**Midjourney**

[www.midjourney.com](http://www.midjourney.com)  
Midjourney's AI generates images from text descriptions, producing realistic to abstract styles. Known for high-quality, well-structured, and detailed art.

**Stable Diffusion**

<https://stablediffusionweb.com/>  
Stable Diffusion - a text-to-image model creates photo-realistic images from any input text. Empowers people to create stunning art in seconds.

**Adobe Firefly**

<https://firefly.adobe.com/>  
Experiment, imagine, and make an infinite range of creations with Firefly, a family of creative generative AI models coming to Adobe products.

**DALL·E 2**

<https://openai.com/research/dall-e>  
DALL·E is a 12-billion parameter version of GPT-3 trained to generate images from text descriptions, using a dataset of text-image pairs.

**Bing**

<https://www.bing.com/create>  
Image Creator is a product that assists users in generating AI images with DALL·E. Given a text message, our AI will generate a set of images that match that message.

# PROMPT FORMULA

**in the style of Wes  
Anderson**

[name of movie/art  
director]

**Framing,**  
portrait

12-35mm  
f/2.8 II lens

Rembrandt,  
Butterfly  
lighting

Andean girl  
of 18 years  
old

**STYLE + COMPOSITION + CAMERA + LIGHTING + SUBJECT + SUBJECT  
DETAILS + ENVIRONMENT + ATMOSPHERE + MOOD + PARAMETERS**

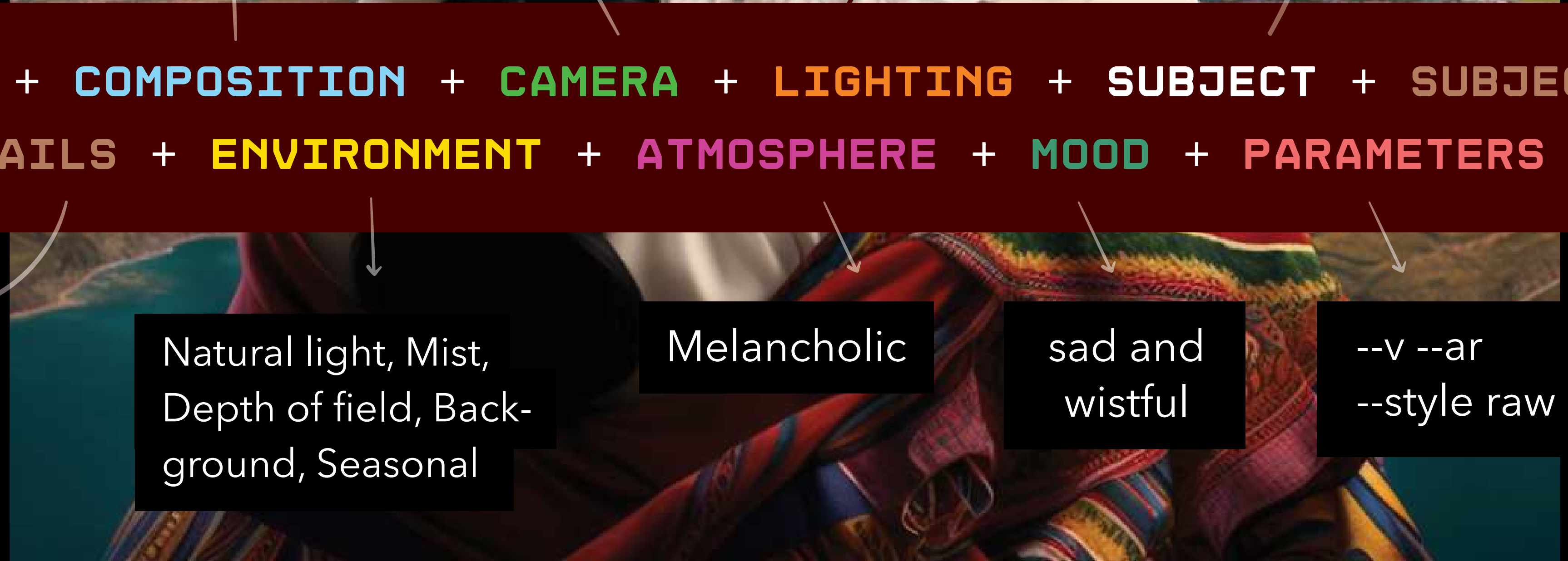
wear a colorful skirt with  
many layers made from wool  
and features bright, intricate  
designs and patterns.

Natural light, Mist,  
Depth of field, Back-  
ground, Seasonal

Melancholic

sad and  
wistful

--v --ar  
--style raw



# PROMPT : : OPTIONS

## STYLE + COMPOSITION + CAMERA + LIGHTING

**Wes Anderson** - Symmetrical, colorful, and whimsical compositions.

**Quentin Tarantino** - Long takes, extreme close-ups, and nonlinear storytelling.

**Christopher Nolan** - Dark, atmospheric, and visually stunning action sequences.

**Guillermo del Toro** - Gothic, fantastical, and visually striking creature designs.

**Tim Burton** - Dark, quirky, and Gothic visuals with a touch of whimsy.

**Stanley Kubrick** - Symmetrical framing, tracking shots, and use of vivid colors.

**David Fincher** - High-contrast lighting, smooth camera movements, and meticulous attention to detail.

**Ridley Scott** - Futuristic, sleek, and visually stunning sci-fi imagery.

**Martin Scorsese** - Fast-paced editing, use of freeze frames and slow motion, and dynamic camera movements.

**Spike Lee** - Use of bold colors, dutch angles, and unconventional camera placements to create a heightened sense of reality.

Rule of Thirds.  
Leading Lines.  
Symmetry and Patterns.  
Depth of Field.  
Framing.  
Negative Space.  
Color Theory.  
Texture.  
Point of View.  
Balancing Elements.

Aperture.  
Shutter Speed.  
ISO.  
Camera Mode.  
Metering Mode.  
Focus Mode.  
Focus Area.  
White Balance.  
File Format.  
Drive Mode.  
Long exposure noise reduction.  
High ISO noise reduction.  
Color Space.  
Image stabilization.  
HDR/DRO.

**Natural light** - it can provide a soft and organic look.

**Artificial light sources** - can be used to create a specific mood and highlight certain aspects of the subject.

**Reflectors and diffusers** - can be used to modify and control the intensity and direction of light sources.

**Color gels and filters** - can be used to adjust the color temperature.

**Shadow play** - to add depth and visual interest to their images.

**High key and low key lighting** - these techniques involve intentionally over or underexposing parts of the image to create a specific mood.

**Rembrandt lighting** - creating a distinctive triangular highlight on the cheek opposite the light source.

**Butterfly lighting** - creating a distinctive butterfly-shaped shadow under the nose.

# PROMPT : : OPTIONS

## ENVIRONMENT + ATMOSPHERE + MOOD + PARAMETERS

**Natural light:** the golden hour or blue hour, to capture the most stunning colors and effects.

**Weather conditions:** dramatic weather conditions such as storms, fog, or mist.

**Seasonal changes:** capturing the beauty of nature and its transformation.

**Location and terrain:** unique features or terrain.

**Backgrounds:** complement or contrast with the subject matter.

**Depth of field:** manipulating the depth of field in an image can create a sense of depth and draw the viewer's eye to a specific point in the image.

**Contrast:** manipulating contrast can help create a sense of drama and mood in an image.

**Reflections:** reflections in water or other reflective surfaces.

**Perspective:** bird's eye view or worm's eye view, can create striking images.

**Time-lapse:** using a long exposure technique, such as time-lapse photography, can create stunning images of the movement and transformation of the natural world.

Serene  
Moody  
Dreamy  
Ethereal  
Mysterious  
Intense  
Dramatic  
Romantic  
Nostalgic  
Whimsical

**Serene** - peaceful and calm

**Dramatic** - intense and powerful

**Mysterious** - enigmatic and puzzling

**Joyful** - happy and cheerful

**Melancholic** - sad and wistful

**Romantic** - dreamy and passionate

**Nostalgic** - sentimental and reflective

**Whimsical** - playful and fanciful

**Eerie** - eerie and unsettling

**Majestic** - grand and awe-inspiring

**--ar Aspect ratio:** The width and height of your image

**--c Chaos:** The amount of variation and randomness in your image

**--q Quality:** The level of detail and rendering time of your image

**Seed:** The starting point for the image generation process

**Stop:** The percentage of completion for the image generation process

**--s Style:** The version of the Midjourney model that is used to generate your image

**Stylize:** The strength of the Midjourney aesthetic style that is applied to your image

**--u Upscaler:** The algorithm that is used to enlarge and enhance your image



## **/Blend**

Allows you to upload 2-5 images quickly and then looks at the concepts and aesthetics of each image and merges them into a novel new image.

## **Narrative prompt**

Is often characterized by insight, creativity, drama, suspense, humor, and/or fantasy. Narrative prompts use cue terms such as "tell about...", "tell what happened", or "write a story."

## **::**

Adding a Double Colon to a prompt indicates to the Midjourney Bot that it should consider each part of the prompt separately.

## **--niji**

Produce anime and illustrative styles with vastly more knowledge of anime, anime styles, and anime aesthetics. It's excellent at dynamic and action shots and character-focused compositions.

## **aa + bb**

Join the different parts of your prompt structure using a distinguishing sign like **+** or **.** to allow the algorithm to understand the context and order of image creation.

## **--no**

Negative prompting, for example: --no plants would try to remove plants from the image.

## **::Weights**

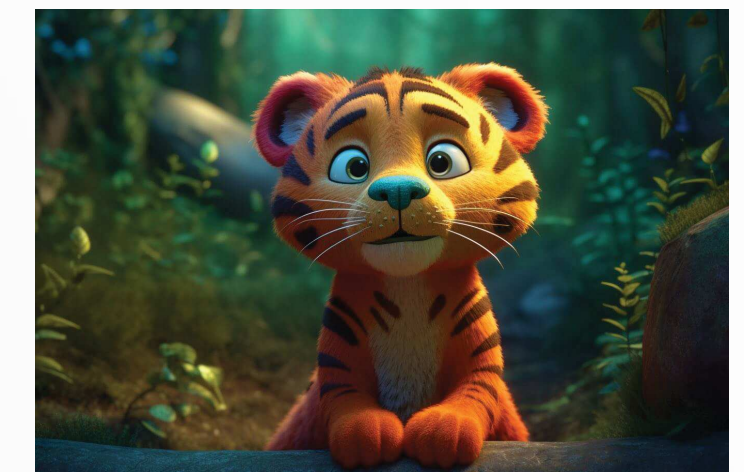
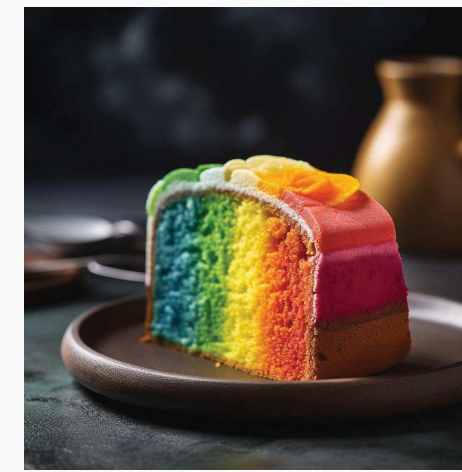
**weight** command tells the MidJourney bot to consider two or more separate concepts within a prompt individually. This is done using the :: separator. :: by itself is just a hard break. If you add a number after it, such as ::2 or ::10, emphasis will be added to the section preceding the ::

## **?**

(interrogate your prompt) Typing the instruction at your prompt as a question will make the bot work to answer correctly and build a more accurate and complex image based on the result of the answer.

# HOW TO USE THIS COLLECTION

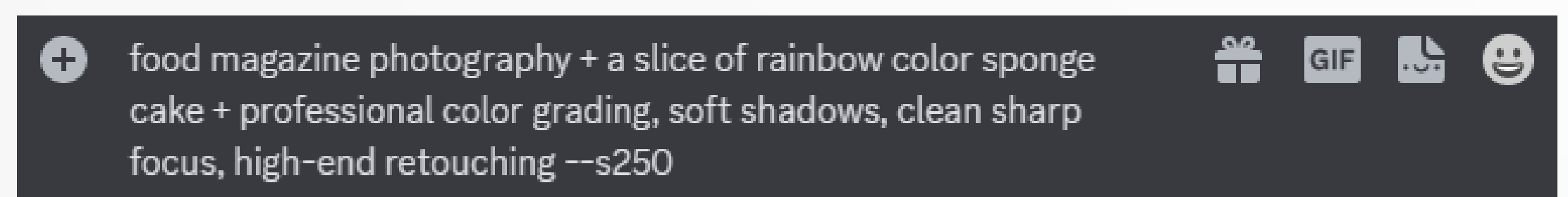
**Step1** Choose a photo that you want to use as inspiration for your creation.



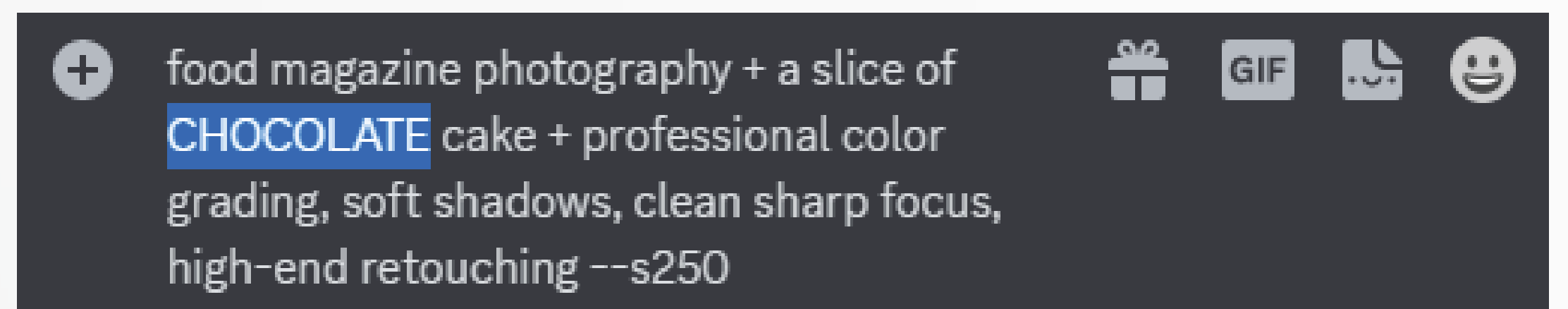
**Step2** Copy the prompt that appears around the image.

**FOOD MAGAZINE PHOTOGRAPHY + A SLICE OF RAINBOW COLOR SPONGE CAKE + PROFESSIONAL COLOR GRADING, SOFT SHADOWS, CLEAN SHARP FOCUS, HIGH-END RETOUCHING --S250**

**Step3** Paste the prompt into the command line of the text-to-image application bot you want to use.



**Step4** Edit the content of the prompt, writing the characteristics and parameters of the image you want to create.



**Step5** Enjoy and repeat!

# ARCHITECTURE

**Step into a world of architectural marvels with AI-generated images of buildings and structures.** From towering skyscrapers to intricate historical landmarks, these images offer a breathtaking glimpse into the world of architecture. Whether you're an architecture enthusiast or simply appreciate the beauty of design, the AI-generated images offer a level of detail and precision that's simply unmatched.



PROMPT:

INTERIOR PHOTOGRAPHY + 4K + CLASSIC VICTORIAN LIVINGROOM +  
EVENING, SIMPLE, ELEGANT, KITCHEN --AR 16:9 --V5

STYLE. COMPOSITION. CAMERA. LIGHTING. SUBJECT. SUBJECT DETAILS. ENVIRONMENT. ATMOSPHERE. MOOD. PARAMETERS



PROMPT:

**HYPER DETAILED, HYPER-REALISTIC, EPIC + NATURAL LIGHT, EXTRA SHARP + OPULENT AFFLUENT DECADENT: A PALATIAL ESTATE WITH GOLD-PLATED ARCHITECTURE, MARBLE STATUES, AND CRYSTAL CHANDELIERs + SURROUNDED BY LUSH, MANICURED GARDENS WITH PEACOCKS ROAMING THE GROUNDS. CAPTURE THE EXTRAVAGANCE OF THIS LUXURIOUS SETTING IN ITS FULL SPLENDOR --AR 2:1 --QUALITY 2 --V5 --SEED 110 --STYLIZE 1000**

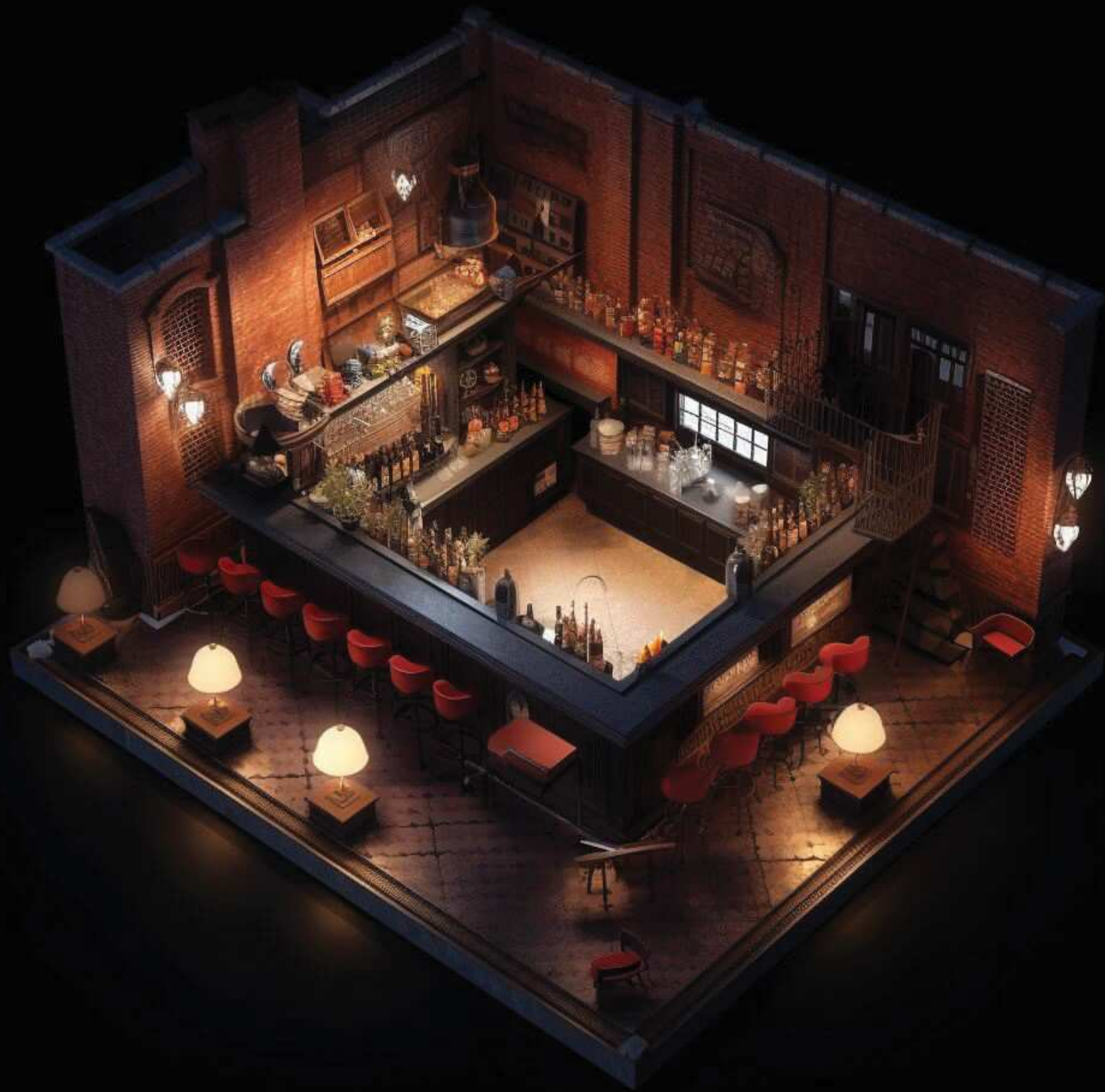
STYLE. COMPOSITION. CAMERA. LIGHTING. SUBJECT. SUBJECT DETAILS. ENVIRONMENT. ATMOSPHERE. MOOD. PARAMETERS



PROMPT:

ISOMETRIC IMAGE + OF A FUTURISTIC SPACESHIP INTERIOR, SLEEK AND STYLISH DESIGN + COCKPIT, LIVING QUARTERS, STORAGE BAYS, ENGINEERING ROOMS, UNIQUE LOOK, BRIGHT AND BOLD COLOR PALETTE, HIGH DETAILS, DETAILED TEXTURES, DEPTH, HOLOGRAPHIC DISPLAYS, GLOWING CONTROL PANELS, SLEEK METAL SURFACES, FUTURISTIC VIBE, VISUALLY STRIKING --AR 16:9 --S750

STYLE. COMPOSITION. CAMERA. LIGHTING. SUBJECT. SUBJECT DETAILS. ENVIRONMENT. ATMOSPHERE. MOOD. PARAMETERS



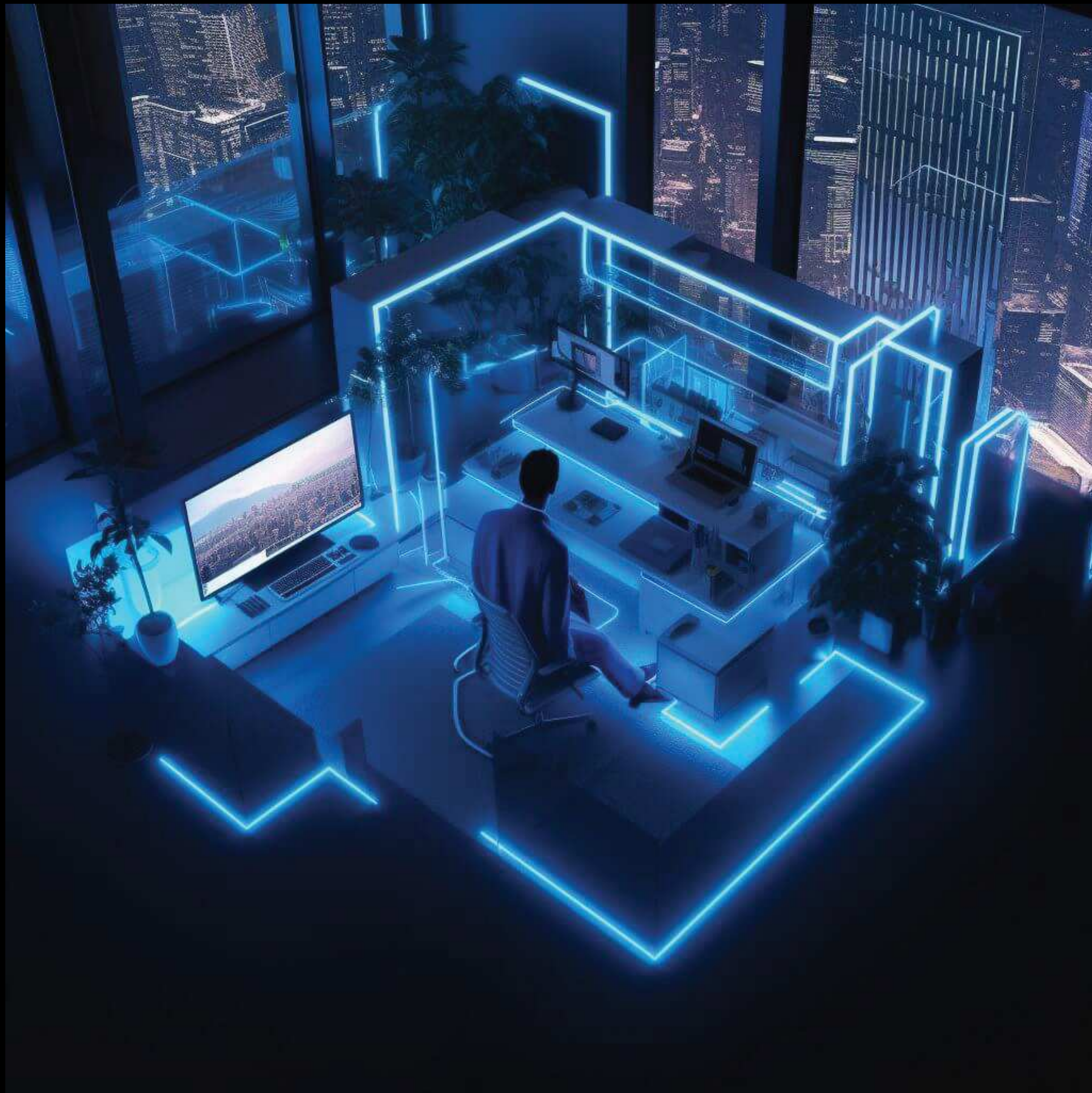
PROMPT :

TOP VIEW 45 DEGREES 3D  
ISOMETRIC VIEW + INTRI-  
CATE DETAILS, OCTANE 3D  
RENDER + VOLUMETRIC  
LIGHTS + A CLASSIC 1930S  
BAR IN NEW YORK CITY +  
BARTENDER, RED BRICK,  
BLACK STEEL, REALISTIC



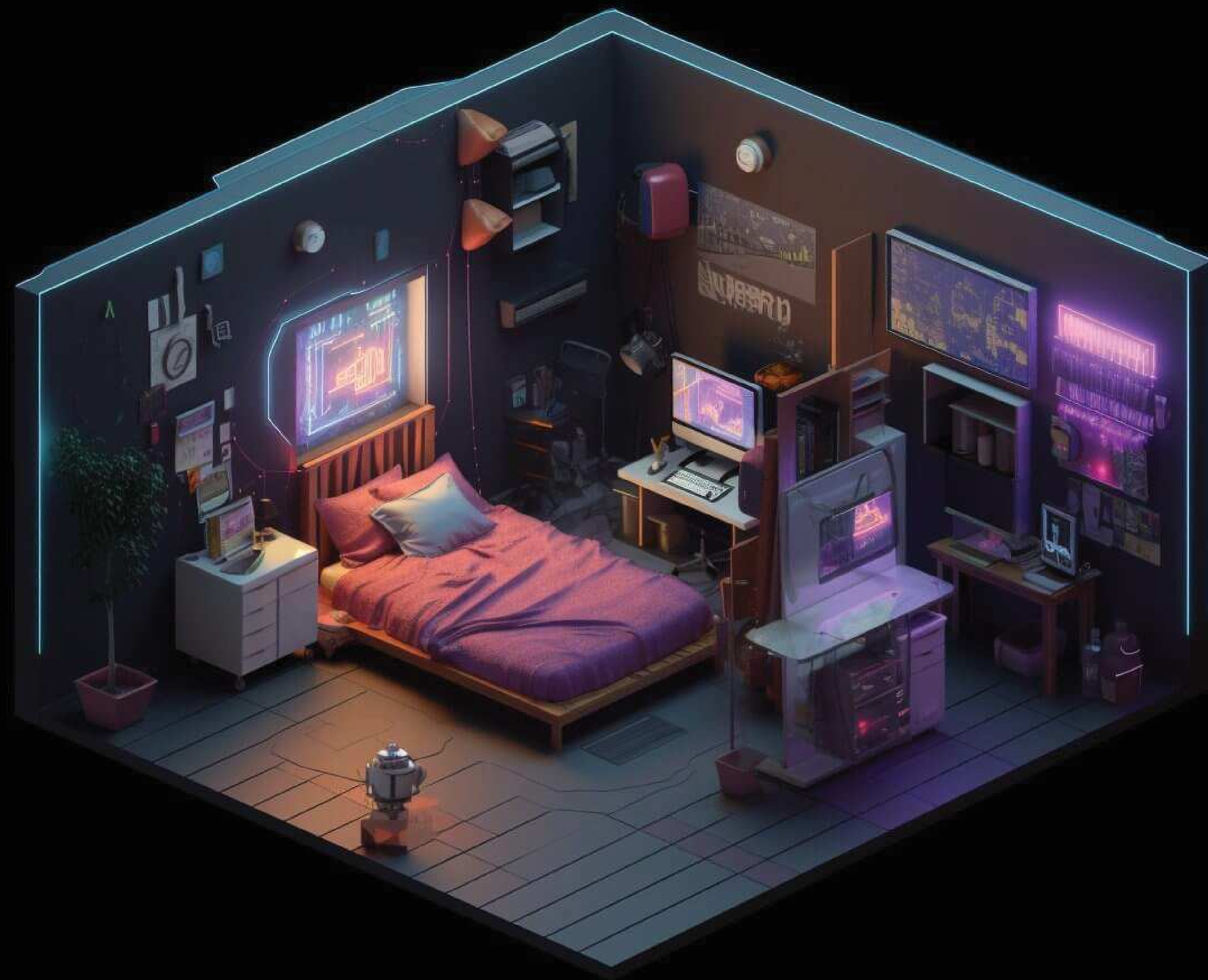
PROMPT :

TOP VIEW 45 DEGREES 3D  
ISOMETRIC VIEW + INTRI-  
CATE DETAILS, OCTANE 3D  
RENDER + VOLUMETRIC  
LIGHTS + A CLASSIC 1930S  
BAR IN NEW YORK CITY +  
BARTENDER, RED BRICK,  
BLACK STEEL, REALISTIC



PROMPT :

TOP VIEW 45 DEGREES 3D  
ISOMETRIC VIEW + INTRI-  
CATE DETAILS, OCTANE 3D  
RENDER + VOLUMETRIC  
LIGHTS + A JAPANESE SAL-  
ARYMAN IN HIS OFFICE IN  
A TOKYO BUILDING + BLUE  
HOUR, WHITE NEON LIGHTS,  
REALISTIC



PROMPT:

COOL ISOMETRIC + CYBERPUNK BEDROOM + WITH A MAC --AR 3:2



PROMPT :

EDITORIAL PHOTOGRAPHY + EARLY MORNING SUNLIGHT + A HOT STEAMING COFFEE WITH VAPOUR OVER A SMALL WOOD LOG COFFEE TABLE + WITH A MODERN CONFY FAMOUS BIG BROWN LEATHER CHAIR IN A MODERN EGG BIOMORPHIC CURVED HOUSE, GLASS FROM FLOOR TO CEILING + IN THE MOUNTAINS OVERLOOKING GORGEOUS VIBRANT AUTUM TREES AND A TEAL RIVER, AUTUM VIBES, HYGGE, RUSTIC WOOD. FUR. WARM SCENE, SUN RAYS. BEAUTIFUL COMPOSITION. VIBRANT COLOURS. MORNING WARM SUN --AR 16:9

STYLE. COMPOSITION. CAMERA. LIGHTING. SUBJECT. SUBJECT DETAILS. ENVIRONMENT. ATMOSPHERE. MOOD. PARAMETERS



PROMPT:

DESIGNED BY THE ARCHITECT SANTIAGO CALATRAVA, AWARD WINNING PROFESSIONAL PHOTOGRAPHY BY JULIUS SHULMAN, PROFESSIONALLY COLOUR GRADED. KELLY WEARSTLER DESIGNED INTERIORS, PIET OUDOLF DESIGNED LANDSCAPE GARDEN, PERCHED ON A CLIFFSIDE OVERLOOKING THE MEDITERRANEAN SEA: : AN ASTONISHING VILLA DESIGNED BY THE ARCHITECT SANTIAGO CALATRAVA + THE MARVELOUS LUXURIOUS AND COZY LIVING ROOM OF AN ASTONISHING VILLA --AR 3:2 --Q2

STYLE. COMPOSITION. CAMERA. LIGHTING. SUBJECT. SUBJECT DETAILS. ENVIRONMENT. ATMOSPHERE. MOOD. PARAMETERS



## PROMPT :

AWARD WINNING PROFESSIONAL ARCHITECTURAL PHOTOGRAPHY + A CONTEMPORARY CANTILEVERED VILLA WITH A METICULOUSLY DESIGNED CONTEMPORARY LANDSCAPE GARDEN + A BEAUTIFUL LAMBORGHINI AVENTADOR SVJ PARKED ON THE CURVILINEAR LUXURY DRIVEWAY. WHITE, FLOOR TO CEILING GLASS, FRAMELESS WINDOWS. BLUE NIGHT SCENE. LONG EXPOSURE SHOT. FILLET EDGES:: THE CANTILEVERED STRUCTURAL SPAN OF THIS GRAVITY DEFYING CONTEMPORARY VILLA CREATES A SENSE OF WEIGHTLESSNESS AND SEAMLESS INTEGRATION WITH THE SURROUNDING ENVIRONMENT, BLUE NIGHT --AR 16:9 --02

STYLE. COMPOSITION. CAMERA. LIGHTING. SUBJECT. SUBJECT DETAILS. ENVIRONMENT. ATMOSPHERE. MOOD. PARAMETERS



PROMPT :

A BEAUTIFUL INTERIOR PHOTOGRAPHY + 8K + OF A HYGGE BREAKFAST IN A WARM BED WITH FUR BY A CURVED FLOOR TO CEILING WINDOW DURING A SUNRISE IN AN ALIEN LIKE CURVED SINUOUS WOOD AND GLASS LUXURY HOTEL WITH CABINS IN A CLEAR TEAL TRANSPARENT WATER LAKE WITH BEAUTIFUL TREES AND VIEW TO MOUNTAINS + A BREAKFAST IN A WARM HYGGE BED, CURVED WOOD DECK WITH A VARANDA. BEAUTIFUL MOUNTAINS. AUTUMN, COZY WARM, HYGGE VIBES, CONTEMPLATIVE, TEAL CLEAR TRANSPARENT WATER. INSPIRING, LUXURY COZY



AI ARCHITECT

PROMPT :

IN THE STYLE OF ECO-KI-  
NETIC, METROPOLIS MEETS  
NATURE, LIFELIKE RENDER-  
INGS, FUTURISTIC ROBOTS,  
BAROQUE-ESQUE ORNATENESS  
+ AWARD WINNING ARCHITEC-  
TURAL PHOTOGRAPHY + USE A  
NIKON D850 WITH A 14-24MM  
F/2.8 LENS, AN APERTURE  
OF F/11, AND AN ISO OF  
100 TO ENSURE OPTIMAL  
SHARPNESS AND DETAIL + A  
TRANSPARENT SHOE STORE ON  
A STREET --AR 2:3 --V5

STYLE. COMPOSITION. CAMERA. LIGHTING. SUBJECT.  
SUBJECT DETAILS. ENVIRONMENT. ATMOSPHERE.  
MOOD. PARAMETERS



## PROMPT :

AWARD-WINNING PROFESSIONAL ARCHITECTURAL PHOTOGRAPHY + UTILIZE A CANON EOS 5D MARK IV WITH A 16-35MM LENS, AN APERTURE OF F/8, AND AN ISO OF 100 TO ENSURE SHARPNESS AND DETAIL + CAPTURE A SHOT OF A CONCEPTUAL CONTEMPORARY ETHEREAL STRUCTURE, UNIQUELY CONSTRUCTED ENTIRELY FROM COLORFUL ORGANZA FABRIC + SHOWCASE THE DELICATE, FLOWING ORGANZA IN A GRID LIKE STRUCTURE AS IT STANDS OUT AGAINST THE SURROUNDING CONCRETE URBAN LANDSCAPE. THE CONCEPTUAL CANTILEVERED ETHEREAL STRUCTURE IS SITUATED AMIDST A METICULOUSLY DESIGNED FRENCH GARDEN THAT COMPLEMENTS THE HOUSE'S ETHEREAL AESTHETICS + EMPHASIZE THE MOOD AND STYLE BY USING WIDE-ANGLE SHOTS AND NATURAL LIGHTING TO HIGHLIGHT THE VIBRANT, TRANSLUCENT FABRIC AGAINST THE BACKDROP --AR 16:9 --S2 --S750 --V5

STYLE. COMPOSITION. CAMERA. LIGHTING. SUBJECT. SUBJECT DETAILS. ENVIRONMENT. ATMOSPHERE. MOOD. PARAMETERS



PROMPT :

AN ARCHITECTURAL PHOTOGRAPH SET IN A BREATHTAKING, FUTURISTIC ENVIRONMENT + FEATURING AN OBLIVION-IN-  
SPIRED HOUSE ON A CLIFFSIDE OVERLOOKING THE OCEAN + THE HOUSE DISPLAYS INTRICATE PANELS, DETAILS, AND  
ARTIFICIAL LIGHTING, WITH A SLEEK, CURVED DESIGN. IN THE DISTANCE, A MESMERIZING ALIEN-LIKE STRUCTURE  
LOOMS, AND TWO COLOSSAL MOONS DOMINATE THE SKY + THE COMPOSITION, CAPTURED USING A WIDE-ANGLE LENS  
DURING GOLDEN HOUR, EMPHASIZES THE HARMONY BETWEEN THE HOUSE, THE DISTANT STRUCTURE, AND THE SURROUNDING  
ENVIRONMENT --AR 16:9 --Q2 --V5

STYLE. COMPOSITION. CAMERA. LIGHTING. SUBJECT. SUBJECT DETAILS. ENVIRONMENT. ATMOSPHERE. MOOD. PARAMETERS



PROMPT:

ARCHITECTURAL PHOTOGRAPH, THE GOLDEN HOUR COMPOSITION, CAPTURED USING A WIDE-ANGLE LENS, CREATES A VISUALLY STRIKING AND UNFORGETTABLE SCENE THAT EMPHASIZES THE HARMONY BETWEEN THE HOUSE, DISTANT ALIEN STRUCTURE, AND THE SURROUNDINGS + FEATURING AN OBLIVION-INSPIRED HOUSE WITH SLEEK CURVES, INTRICATE PANELS, AND ARTIFICIAL LIGHTING ON A CLIFFSIDE OVERLOOKING THE OCEAN:: MESMERIZING ALIEN-LIKE STRUCTURE IN THE DISTANCE:: BREATHTAKING, FUTURISTIC ENVIRONMENT WITH TWO PLANETS IN THE SKY --AR 16:9 --Q2 --V5

STYLE. COMPOSITION. CAMERA. LIGHTING. SUBJECT. SUBJECT DETAILS. ENVIRONMENT. ATMOSPHERE. MOOD. PARAMETERS



PROMPT:

MINIMALISTIC ENVIRONMENT FOR LIVING AND LOVING + CLEAN AND AIRY, SIMPLE FORMS, LIGHT TURQUOISE AND PURE WHITE, SUNLIGHT AND CRISP SHADOWS --AR 3:2 --V5



MONTES

PROMPT :

LIGHT COLORS + A PRIMITIVE INTERIOR DESIGN STYLE FOR MODERN TIMES + KITCHEN, MINIMALIST SWEDEN HOUSE, SUNSHINE, GREEN PLANTS, WITH EARTHY FINISHES AND COZY DETAILING THROUGHOUT, CANDLE LIT EVENING TIME --AR 2:3 --S250 --V5

STYLE. COMPOSITION. CAMERA. LIGHTING. SUBJECT.  
SUBJECT DETAILS. ENVIRONMENT. ATMOSPHERE.  
MOOD. PARAMETERS



PROMPT :

THE IMAGE IS CAPTURED WITH A 50MM PRIME LENS ON A FULL-FRAME DSLR, CREATING A SHARP, VIVID PORTRAYAL OF THE ENCHANTING TABLEAU + A LONESOME TRAVELER STUMBLES UPON AN ABANDONED, YET IMPECCABLY PRESERVED VICTORIAN GREENHOUSE + THE SUNLIGHT FILTERS THROUGH THE INTRICATE STAINED-GLASS CEILING, CASTING A KALEIDOSCOPE OF COLORS ONTO THE FLOURISHING PLANTS BELOW. A SINGLE ARMCHAIR IS CAUGHT AMIDST THE OVERGROWN FOLIAGE, ADDING AN INEXPLICABLE SENSE OF WHIMSY TO THE OTHERWISE FORGOTTEN SPACE --AR 3:2 --V5 --S1000 --Q2 --C30

STYLE. COMPOSITION. CAMERA. LIGHTING. SUBJECT. SUBJECT DETAILS. ENVIRONMENT. ATMOSPHERE. MOOD. PARAMETERS



PROMPT:

SHOT WITH A 35MM LENS ON A FULL-FRAME CAMERA, THE PHOTO EMPHASIZES THE GARDEN'S UNEXPECTED BEAUTY IN THE MIDST OF THE URBAN LANDSCAPE + A HIDDEN OASIS IN THE HEART OF THE CITY + THIS ROOFTOP GARDEN IS AN ECLECTIC MIX OF LUSH GREENERY, BEAUTIFUL FLOWERS, RECLAIMED MATERIALS, AND VIBRANT STREET ART. THE IMAGE CAPTURES THE JUXTAPOSITION OF NATURE AND MAN-MADE STRUCTURES, WITH SUNLIGHT STREAMING THROUGH THE FOLIAGE AND CASTING PLAYFUL SHADOWS ON THE GRAFFITI-COVERED WALLS --C20 --AR 3:2 --V5 --S1000 --Q2

STYLE. COMPOSITION. CAMERA. LIGHTING. SUBJECT. SUBJECT DETAILS. ENVIRONMENT. ATMOSPHERE. MOOD. PARAMETERS



PROMPT :

SHOT IN 4K + NATURAL LIGHTING + VINTAGE VICTORIAN ARMCHAIR + WITH CARVED MAHOGANY FRAME ,  
UPHOLSTERED IN TUFTED LEATHER + SET AGAINST A HAND-PAINTED WALL MURAL OF A LUSH GARDEN  
LANDSCAPE --AR 16:9

STYLE . COMPOSITION . CAMERA . LIGHTING . SUBJECT . SUBJECT DETAILS . ENVIRONMENT . ATMOSPHERE . MOOD . PARAMETERS



PROMPT :

PROFESSIONAL REAL ESTATE PHOTOGRAPHY INTERIOR, WIDE ANGLE, CLEAR, BRIGHT, HIGH - QUALITY, SONY A7R III MIRRORLESS CAMERA, ADOBE PHOTOSHOP, PROFESSIONAL, CORPORATE, AWARD - WINNING + THE MOST WONDERFUL HOUSE EVER + LAVISH HOME EXTERIOR, EXQUISITE ARCHITECTURAL DETAILS, LUSH GARDENS, PRIVATE ISLAND, BREATHTAKING OCEAN VIEWS, INFINITY POOL, LUXURIOUS AMENITIES

STYLE. COMPOSITION. CAMERA. LIGHTING. SUBJECT. SUBJECT DETAILS. ENVIRONMENT. ATMOSPHERE. MOOD. PARAMETERS



PROMPT :

PROFESSIONAL REAL ESTATE PHOTOGRAPHY INTERIOR, WIDE ANGLE, CLEAR, BRIGHT, HIGH - QUALITY, SONY A7R III MIRRORLESS CAMERA, ADOBE PHOTOSHOP, PROFESSIONAL, CORPORATE, AWARD - WINNING + FLOATING, ECO - FRIENDLY HOME EXTERIOR + DESIGNED TO ADAPT TO RISING SEA LEVELS, FEATURING A MODULAR STRUCTURE, SOLAR PANELS, AND WATER COLLECTION SYSTEMS, ANCHORED IN A SERENE COASTAL LAGOON

STYLE. COMPOSITION. CAMERA. LIGHTING. SUBJECT. SUBJECT DETAILS. ENVIRONMENT. ATMOSPHERE. MOOD. PARAMETERS



PROMPT:

PROFESSIONAL REAL ESTATE PHOTOGRAPHY INTERIOR, WIDE ANGLE, CLEAR, BRIGHT, HIGH - QUALITY, SONY A7R III MIRRORLESS CAMERA, ADOBE PHOTOSHOP, PROFESSIONAL, CORPORATE, AWARD - WINNING + RETROFUTURISTIC DREAM HOME EXTERIOR + BLENDING SEAMLESSLY WITH NATURE, SUSTAINABLE DESIGN ELEMENTS, ROOFTOP GARDEN, FLOOR - TO - CEILING WINDOWS FOR NATURAL LIGHT, COZY OUTDOOR LIVING SPACES, NESTLED IN A SERENE FOREST SETTING

STYLE. COMPOSITION. CAMERA. LIGHTING. SUBJECT. SUBJECT DETAILS. ENVIRONMENT. ATMOSPHERE. MOOD. PARAMETERS



PROMPT :

STYLE CYBERPUNK ENTERTAINMENT DEVICE, VERY FUTURISTIC WITH LED'S AND ADVANCE TECH + MAJESTICALLY CINEMATIC CLOSE UP PROFESSIONAL PHOTO QUALITY SHOT + 8K SHARP FOCUS. EXPERT PRECISION INCLUDING INTRICATE EXAMPLES OF UNDENIABLY AMAZING IMAGE QUALITY AND DETAILED DESIGN, STUNNING UNIQUE WITH INTRICATE DETAILS, AMAZING BACKGROUND DETAIL + CINEMATIC LIGHTING + OF A FUTURISTIC NEON LIT + IN THE BACKGROUND OF THE CYBERPUNK APARTMENT A LARGE WINDOW SHOWING CYBERPUNK TOWERING CITY, EXTREMELY DETAILED MAGAZINE QUALITY PHOTOGRAPH --s1000 --q2 --c30 --AR 3:2 --v5

STYLE. COMPOSITION. CAMERA. LIGHTING. SUBJECT. SUBJECT DETAILS. ENVIRONMENT. ATMOSPHERE. MOOD. PARAMETERS



LINUS

PROMPT :

IN THE STYLE OF CURVED  
MIRRORS, BOLD, CARTOON-  
ISH LINES, NEOCLASSICAL  
STYLE, FILIP HODAS,  
MOODY COLOR SCHEMES,  
POSTMODERN BRICOLAGE,  
SCULPTURAL AESTHETICS,  
DARK CYAN AND LIGHT  
AMBER + THE COLORFUL  
LIVING ROOM FEATURES A  
COLORFUL SOFA --AR  
140:157 --V5

STYLE. COMPOSITION. CAMERA. LIGHTING. SUBJECT.  
SUBJECT DETAILS. ENVIRONMENT. ATMOSPHERE.  
MOOD. PARAMETERS



PROMPT:

HIGH SPACE SYMMETRICAL CLOSE-UP PHOTO SHOOT + OF A WHITE DOME HOUSE STANDING IN THE RED MARS DESERT + VERTICAL GREENS INSIDE, ASTRONAUT, ULTRA REALISTIC, MORNING LIGHT, HYPER DETAILED, RED-CORE, SILVER-CORE --AR 16:9 --Q2 --V5

STYLE. COMPOSITION. CAMERA. LIGHTING. SUBJECT. SUBJECT DETAILS. ENVIRONMENT. ATMOSPHERE. MOOD. PARAMETERS



## PROMPT :

AWARD WINNING PROFESSIONAL ARCHITECTURAL PHOTOGRAPHY + HYPERDETAILED, 8K + A SAOTA ARCHITECTURE INSPIRED CONTEMPORARY MODERN MANSION ON THE TOP OF A SINUOUS HILL OVERLOOKING LOS ANGELES + THE MANSION HAS AN STUNNING INFINITE POOL AND A METICULOUSLY DESIGNED LANDSCAPE GARDEN WITH MULTIPLE LAYERS THAT BLENDS SEAMLESSLY WITH THE LUSH LOCAL NATURE. THE MANSION PORTRAITS CURVED AND HORIZONTAL FORMS WITH FLOOR TO CEILING GLASS. IT DEVELOPS IN MULTIPLE PLATEAUS THAT FOLLOWS THE HILL. CONCRETE, WHITE, STONE, DARK GRAY, DEEP GREEN, GRASS, GOLDEN, AMBER. SAOTA ARCHITECTURE INSPIRED --AR 16:9 --V5

STYLE. COMPOSITION. CAMERA. LIGHTING. SUBJECT. SUBJECT DETAILS. ENVIRONMENT. ATMOSPHERE. MOOD. PARAMETERS



PROMPT :

A MINIMALIST BEDROOM FILLED WITH NEON LIGHTS + DREAMY, ULTRAWIDE MONITOR WITH PC MASTER-RACE, IN THE STYLE OF HIGHLY DETAILED ENVIRONMENTS, VINTAGE AESTHETICS, BRIAN DESPAIN, SUBTLE GRADIENTS, THE SNAPSHOT AESTHETIC, SEAPUNK, TEAL AND MAGENTA --AR 16:9 --V5

STYLE. COMPOSITION. CAMERA. LIGHTING. SUBJECT. SUBJECT DETAILS. ENVIRONMENT. ATMOSPHERE. MOOD. PARAMETERS

GET NOW THE FULL SUPERB  
PROMPT BIBLE IN YOUR  
FAVORITE E-BOOK STORE.

Don't forget to enter our  
platform for **free** and  
get early access to  
thousands of prompts  
turned into images that are  
updated every day.



HTTPS://  
**SUPERB-PROMPT**  
**.WEB.APP**





UNIQORNIO